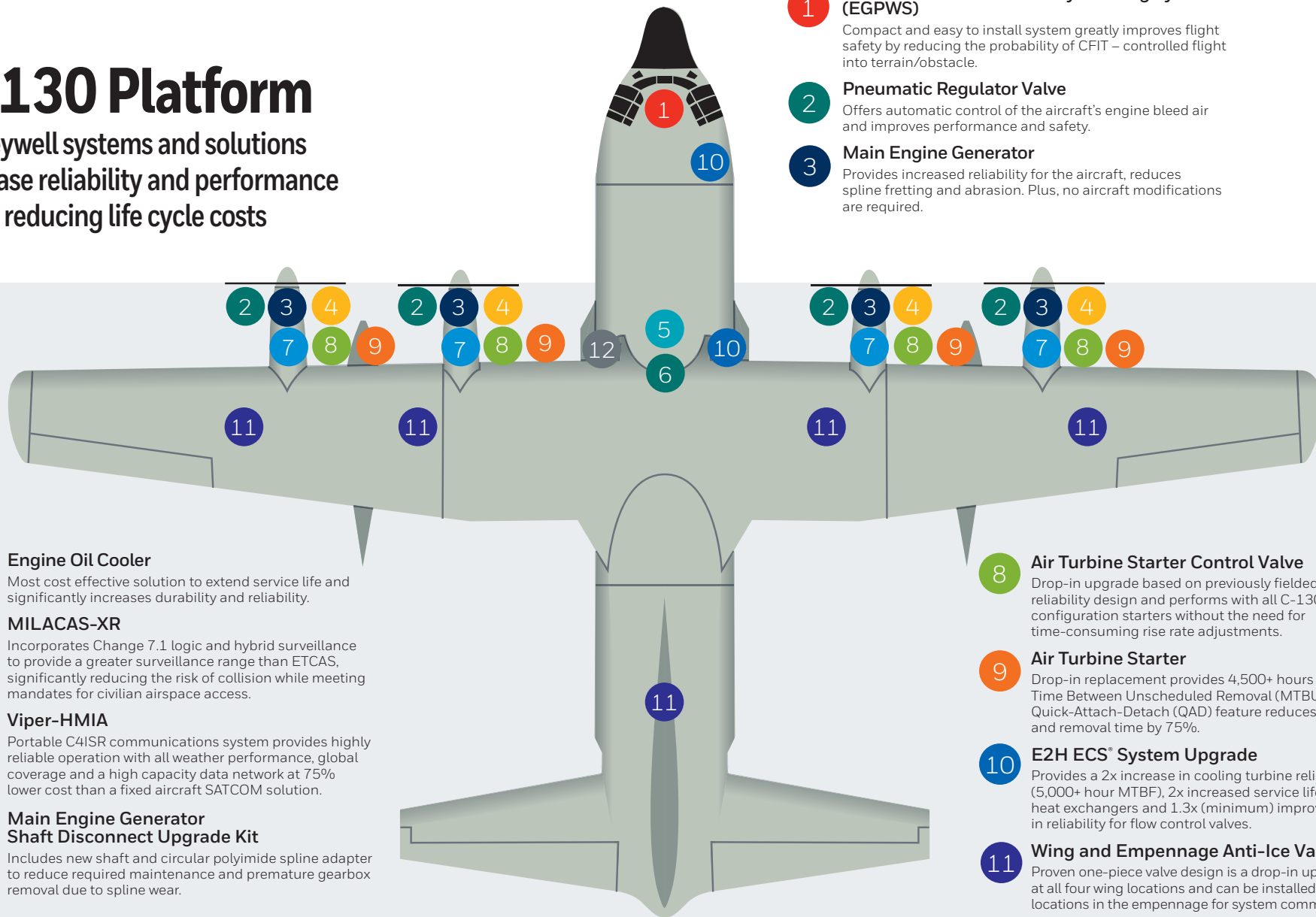


C-130 Platform

Honeywell systems and solutions increase reliability and performance while reducing life cycle costs



- 1 Enhanced Ground Proximity Warning System (EGPWS)**
Compact and easy to install system greatly improves flight safety by reducing the probability of CFIT – controlled flight into terrain/obstacle.
- 2 Pneumatic Regulator Valve**
Offers automatic control of the aircraft's engine bleed air and improves performance and safety.
- 3 Main Engine Generator**
Provides increased reliability for the aircraft, reduces spline fretting and abrasion. Plus, no aircraft modifications are required.

- 4 Engine Oil Cooler**
Most cost effective solution to extend service life and significantly increases durability and reliability.
- 5 MILACAS-XR**
Incorporates Change 7.1 logic and hybrid surveillance to provide a greater surveillance range than ETCAS, significantly reducing the risk of collision while meeting mandates for civilian airspace access.
- 6 Viper-HMIA**
Portable C4ISR communications system provides highly reliable operation with all weather performance, global coverage and a high capacity data network at 75% lower cost than a fixed aircraft SATCOM solution.
- 7 Main Engine Generator Shaft Disconnect Upgrade Kit**
Includes new shaft and circular polyimide spline adapter to reduce required maintenance and premature gearbox removal due to spline wear.

- 8 Air Turbine Starter Control Valve**
Drop-in upgrade based on previously fielded, high reliability design and performs with all C-130 configuration starters without the need for time-consuming rise rate adjustments.
- 9 Air Turbine Starter**
Drop-in replacement provides 4,500+ hours Mean Time Between Unscheduled Removal (MTBUR). Quick-Attach-Detach (QAD) feature reduces install and removal time by 75%.
- 10 E2H ECS® System Upgrade**
Provides a 2x increase in cooling turbine reliability (5,000+ hour MTBF), 2x increased service life for heat exchangers and 1.3x (minimum) improvement in reliability for flow control valves.
- 11 Wing and Empennage Anti-Ice Valve**
Proven one-piece valve design is a drop-in upgrade at all four wing locations and can be installed at two locations in the empennage for system commonality.
- 12 SHORT-POD® APU Upgrade**
Increases airflow for better ECS performance and expands generator capability from 20 to 40 KVA using longer-life materials for a 4x improvement in reliability. Repair capabilities on associated APU LRUs.

Contact:

Armando Boucourt
armando.boucourt@kellstromdefense.com
954-538-2483